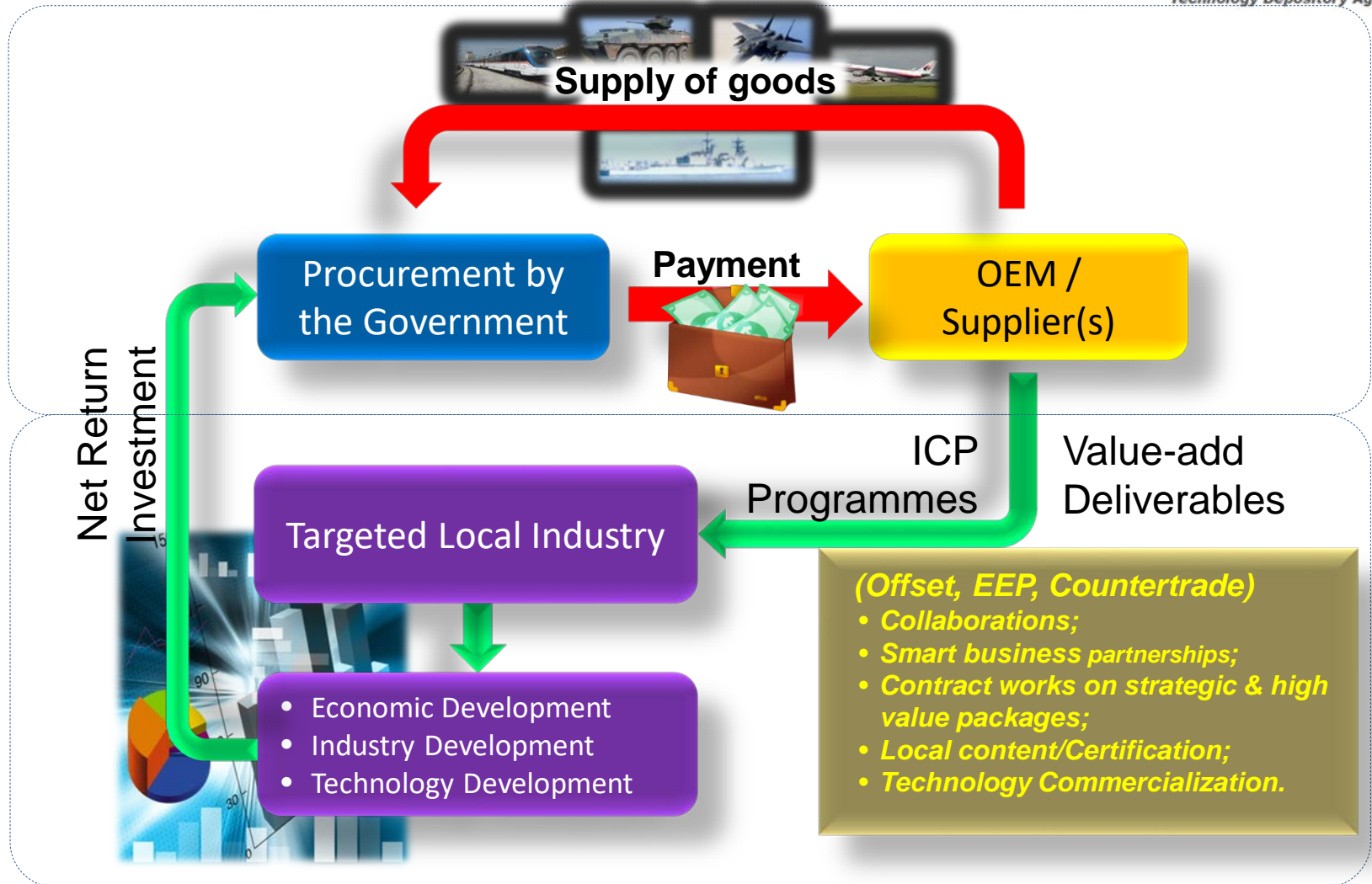


# The ICP – Simplified Model



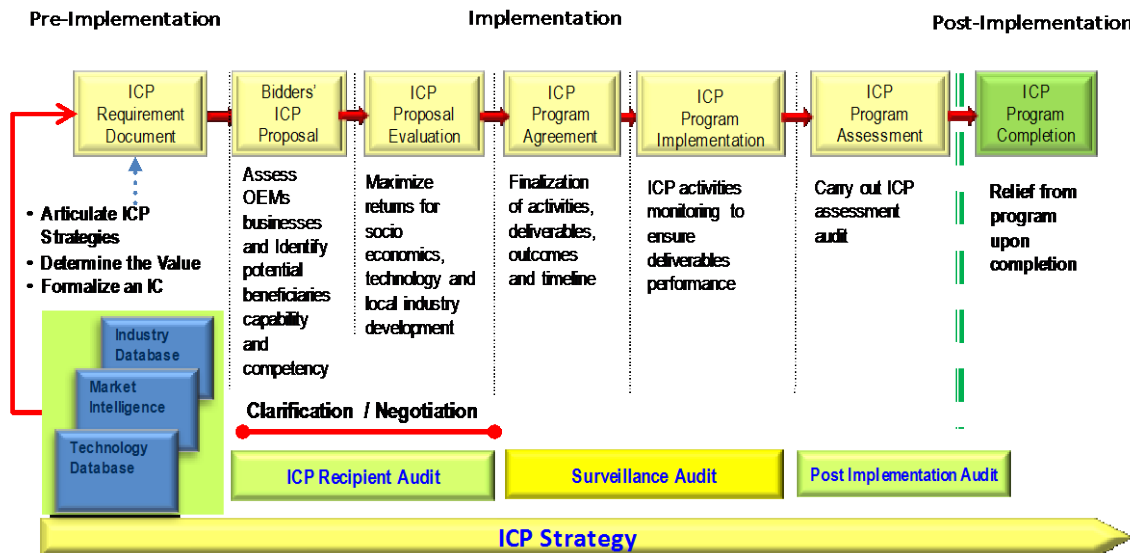
**ICP** is a program involving activities that provide **value-add** to any procurement made by the Government of Malaysia.

# Introduction – About TDA

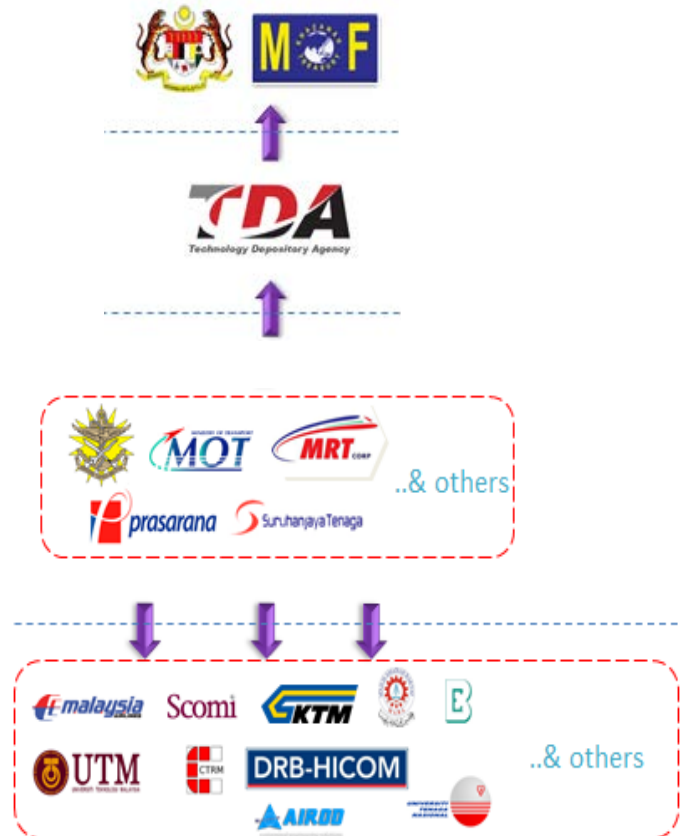


TDA's core function is to manage, administer and monitor all Industrial Collaboration Program (ICP) activities implementation in Malaysia to ensure they comply to the processes and requirements as stipulated in the Malaysian ICP Management Framework.

## Malaysian ICP Management Framework



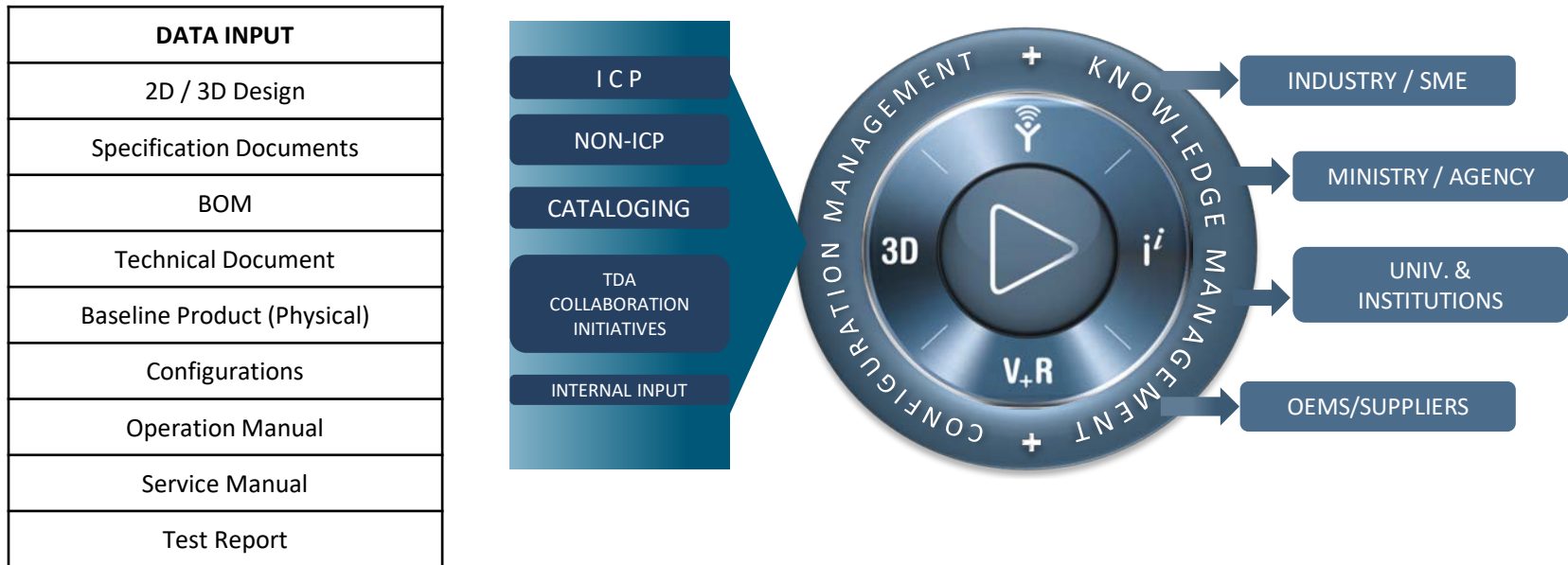
## ICP Implementation Structure



# ICP Intelligent Data Management System – I<sup>2</sup>DMS

❖ **Collaborative platform and centralized program management system that currently cater for;**

1. Industrial Collaboration Program (ICP) Management
2. Contract Management – Performance Based Contract (PBC) and Contract Management Office (CMO)
3. Project Management Office (PMO)
4. Supply Chain Development Program
5. Center of Excellence (Technology & Industry Development)



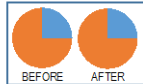
❖ **Secured Systems in compliance with the Information Security and Management System (ISMS ISO 27001: 2013). Target Certification: March 2018**

# Impact Analysis

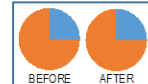
## OVERALL OBJECTIVE

To promote **better transportation** within the Klang Valley region while boosting **economic growth**, **creating jobs**, and have other multiplier effects like **increasing property value** and **tax revenues** for Government both during the construction period, functioning period.

### BETTER TRANSPORTATION



### ECONOMIC GROWTH



### CREATING JOBS



### PROPERTY VALUE



### TAX REVENUE



### SOCIAL

PERFORMANCE	SAFETY	CONDITION
TRAFFIC CONGESTION	ACCIDENT RATE	FACILITIES
AVG TRAVEL TIME (ROAD)	INJURY & DEATH RATE	RIDE QUALITY
AVG TRAVEL TIME (TRAIN)	AIR QUALITY	MAINTENANCE
ON-TIME ARRIVAL	CARBON EMISSION	CLEANLINESS

### ECONOMIC

PEOPLE	FINANCE
EMPLOYMENT RATE	REVENUE
BUMI PARTICIPATION	EXPENDITURE
LOCALIZATION	PROPERTY DEVELOPMENT
LABOUR FORCE (P) RATE	TAX REVENUE

